

Masterpiece
HOMES

3 & 4 BHK | Regal
Lavish Homes | Duplexes

DESIGNED BY EXPERTS

A PROJECT BY



brm.co.in

Panache is a masterpiece crafted for the people who live regally and who never compromise on their luxury, comfort and style.

The majestic architecture sits proudly on one of the prime locations of Ahmedabad at Vaishnodevi Circle. We've created a place for the future with sustainability at the core; that fits seamlessly within Panache.

MAJESTIC ARCHITECTURE, CONTEMPORARY DESIGN AND EVERYTHING IN BETWEEN.

PANACHE
Lavish Homes | Regal Duplexes

Luxury Living

(The Balcony with all Doors)

Sky above Earth below:
Happiness is having a king size balcony.



Project Features

01

KING SIZE
BALCONY

02

REGAL
DUPLEXES

03

THREE LAYER
BASEMENT PARKING

04

ALL TOWERS CONNECTED
WITH SKYBRIDGE

05

LARGE NUMBER OF
VISITOR PARKING

06

PRIME
LOCATION

07

PERSONAL
ELEVATORS

08

NO VEHICLE ZONE AT
GROUND LEVEL

09

MODERN ENTRANCE
FOYER

10

SEPARATE MANAGEMENT FOR
RESIDENTIAL & COMMERCIAL

11

GATED
SOCIETY

12

SUSTAINABLE
CONSTRUCTION

Location

It's proximity to the triple layer flyover, makes Panache the most convenient project in Ahmedabad.





Muji Joules Levi's Pantaloon Blue Stone Spykar Westside Dow Jones Adidas Channel Westside Zara Levi's Spykar
Adidas Chanel Fashion House Tommy Hilffiger HECO HUB Piba Pantaloon AND Crossword MAX Muji C9 Dow Jones Blue Stone

Here, *light & air*
new family members

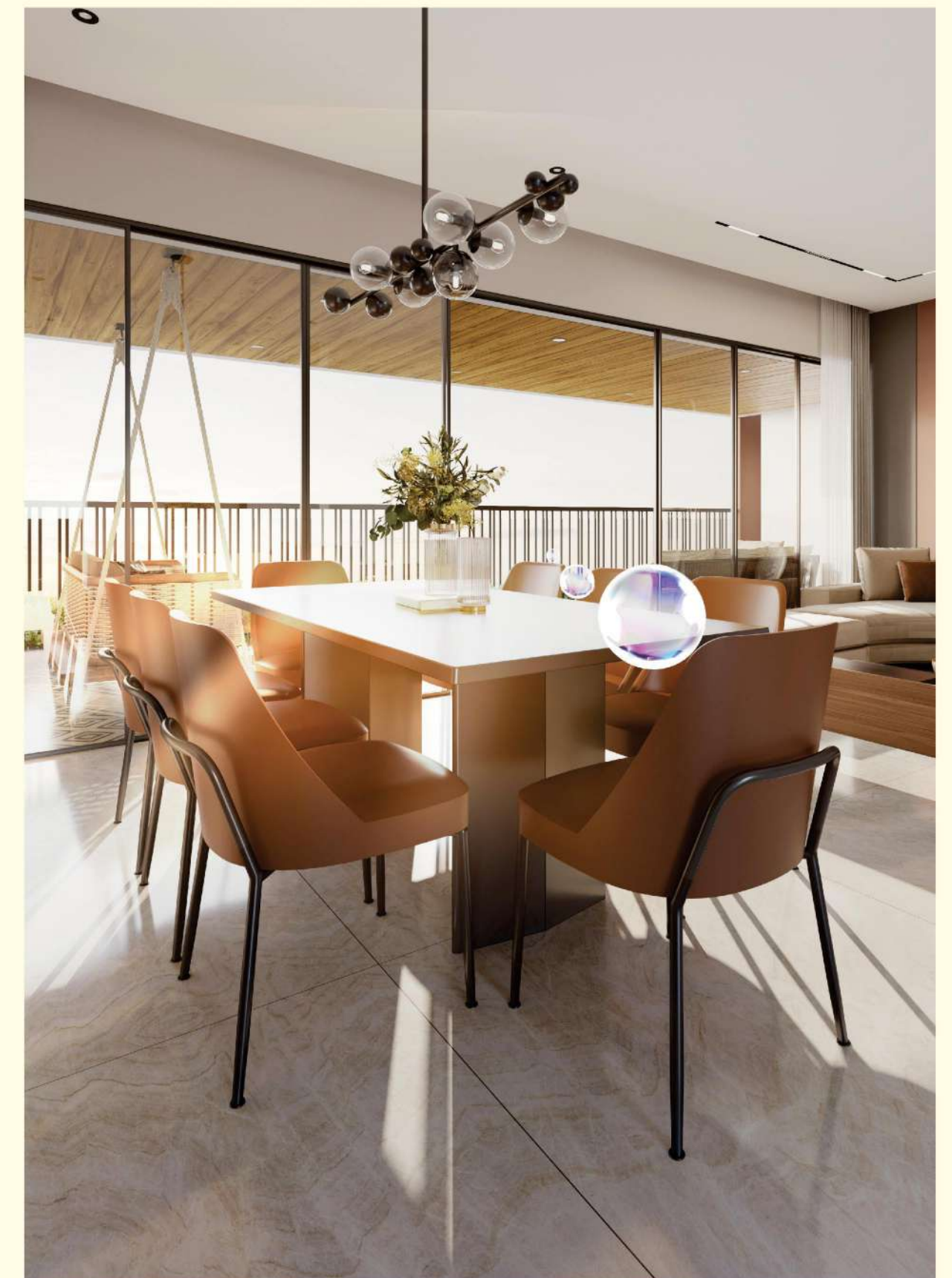
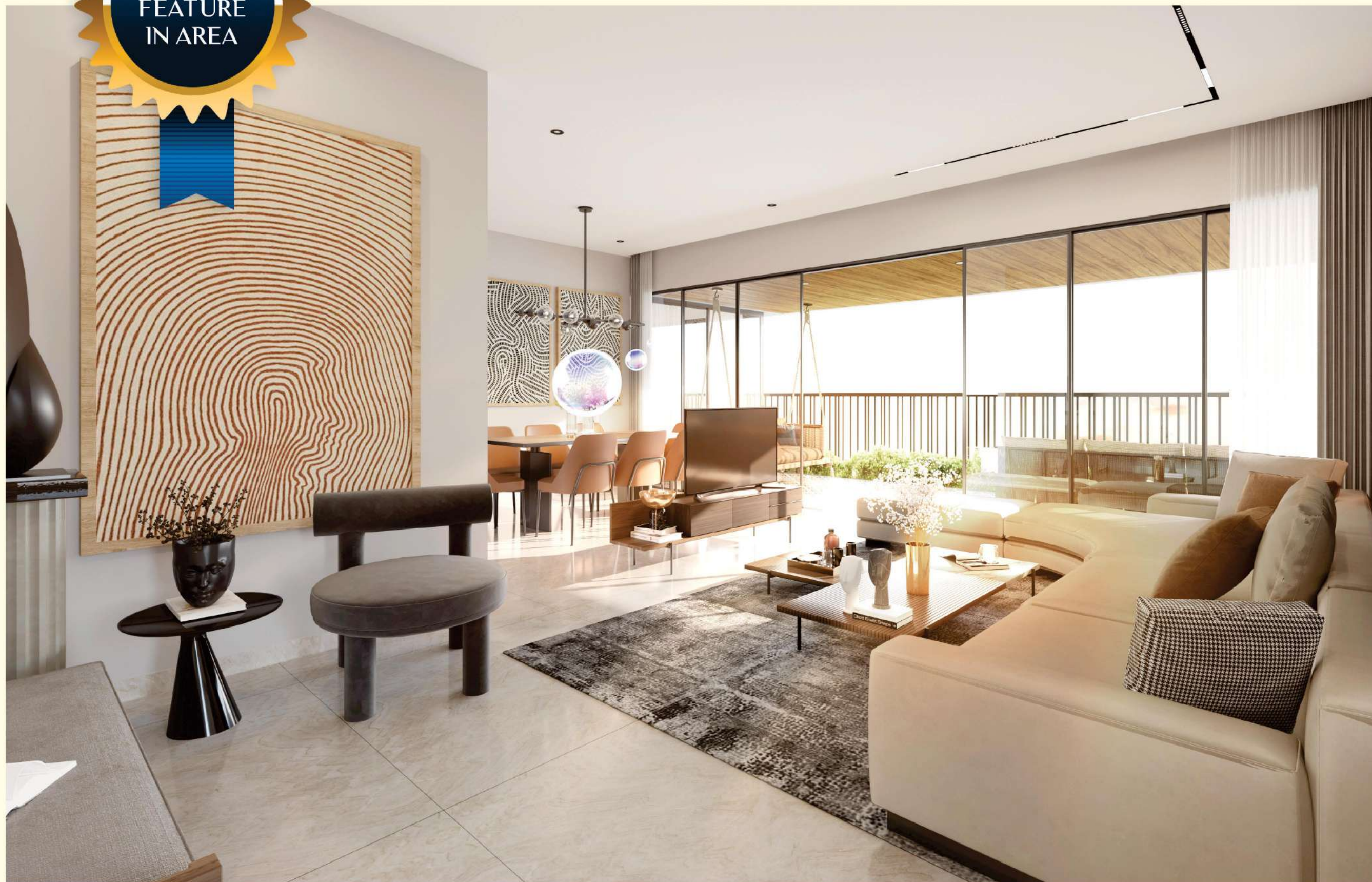


living only

(Living + Balcony)

dining only

(Dinning + Balcony)



The green zone

(Terrace & Ground Level Garden)

UNIQUE
FEATURE
IN AREA



Multilevel parking

(3 Layer Basement Parking, No Stack Parking)

UNIQUE
FEATURE
IN AREA



Regal Duplexes

(Double Height Courtyard Balcony)

Stargazing will become your new hobby here.



Modern Kitchen

Warm kitchen & good food are what make a house a home.





Modern Amenities

Children Play Area



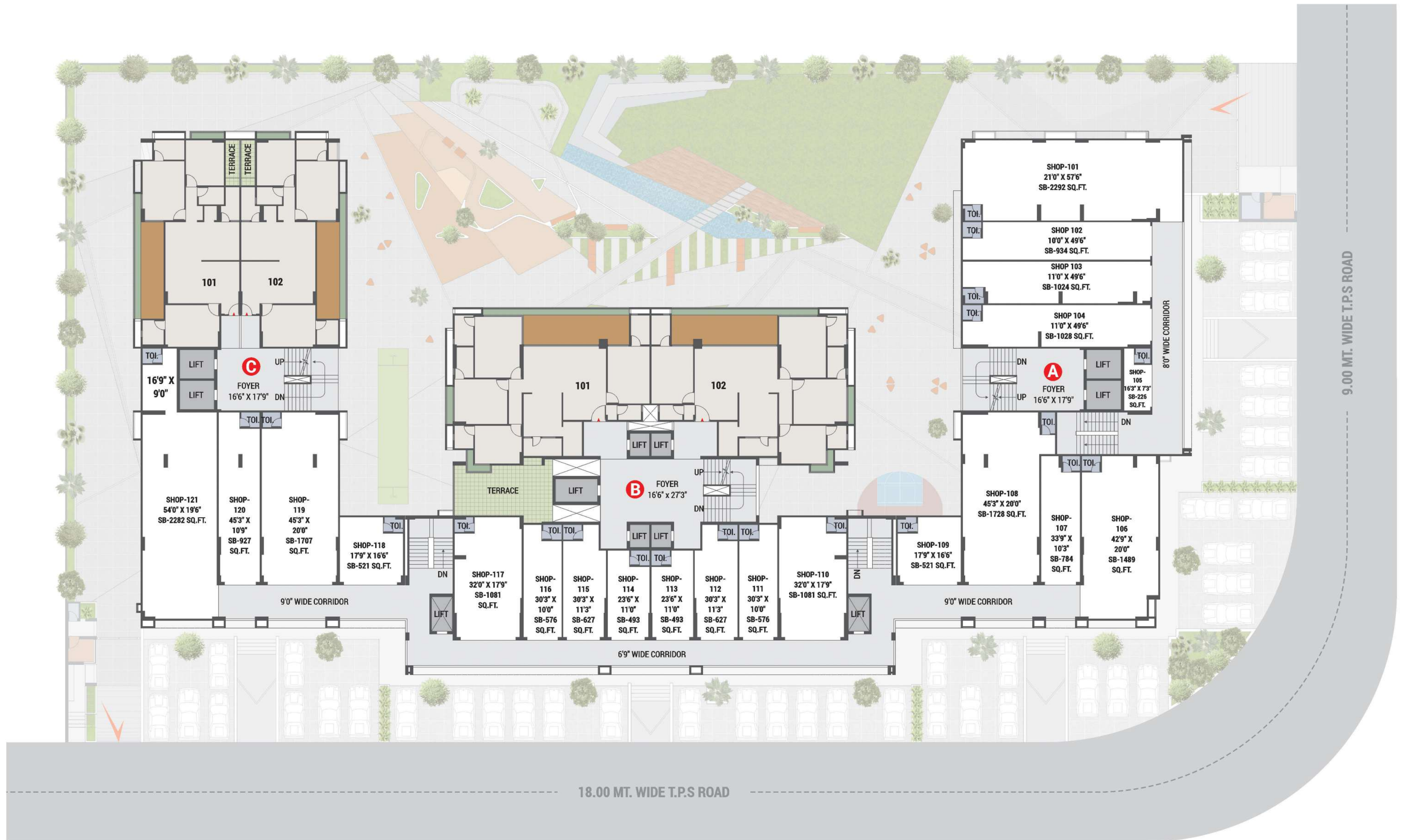
Indoor Games



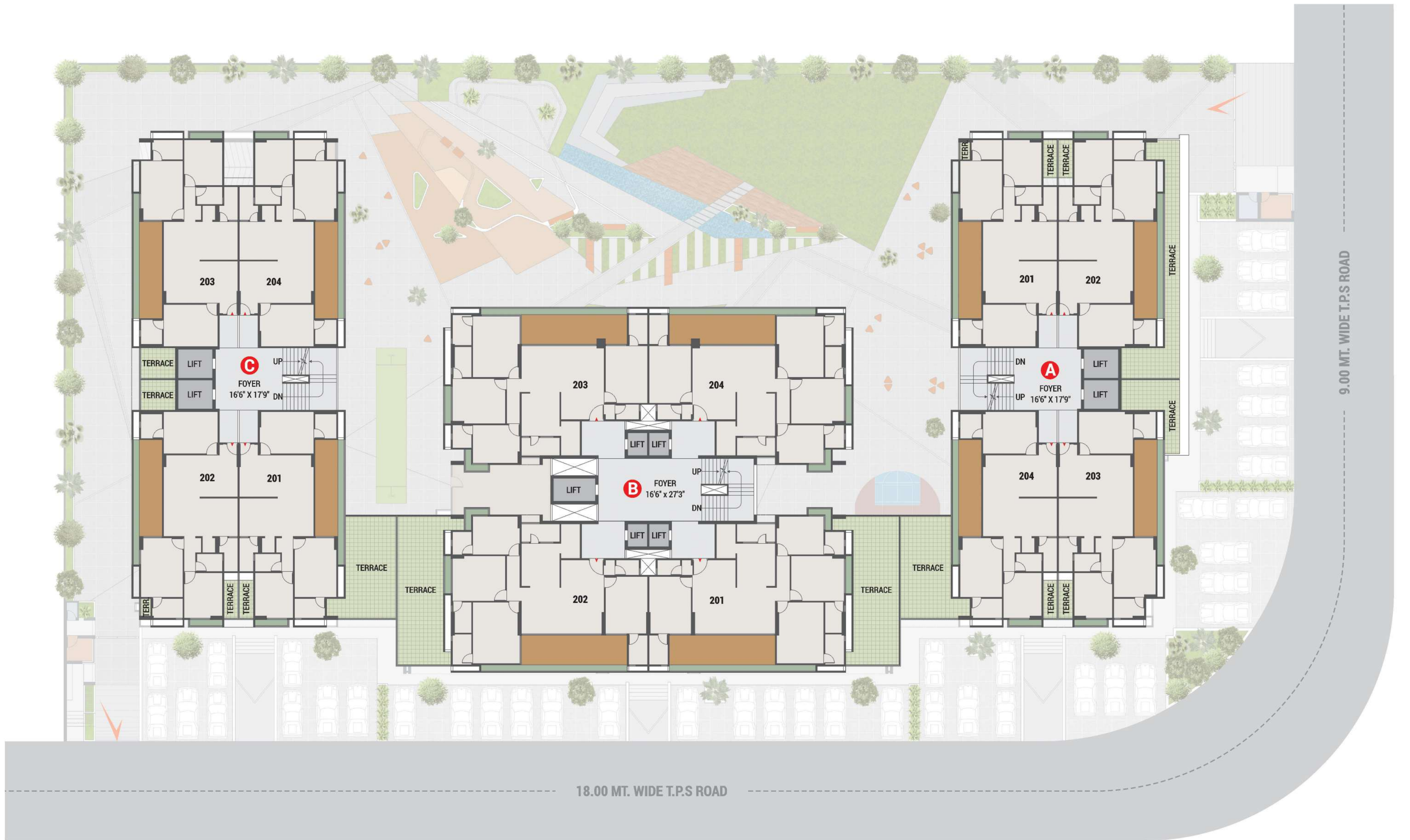
Landscape Garden



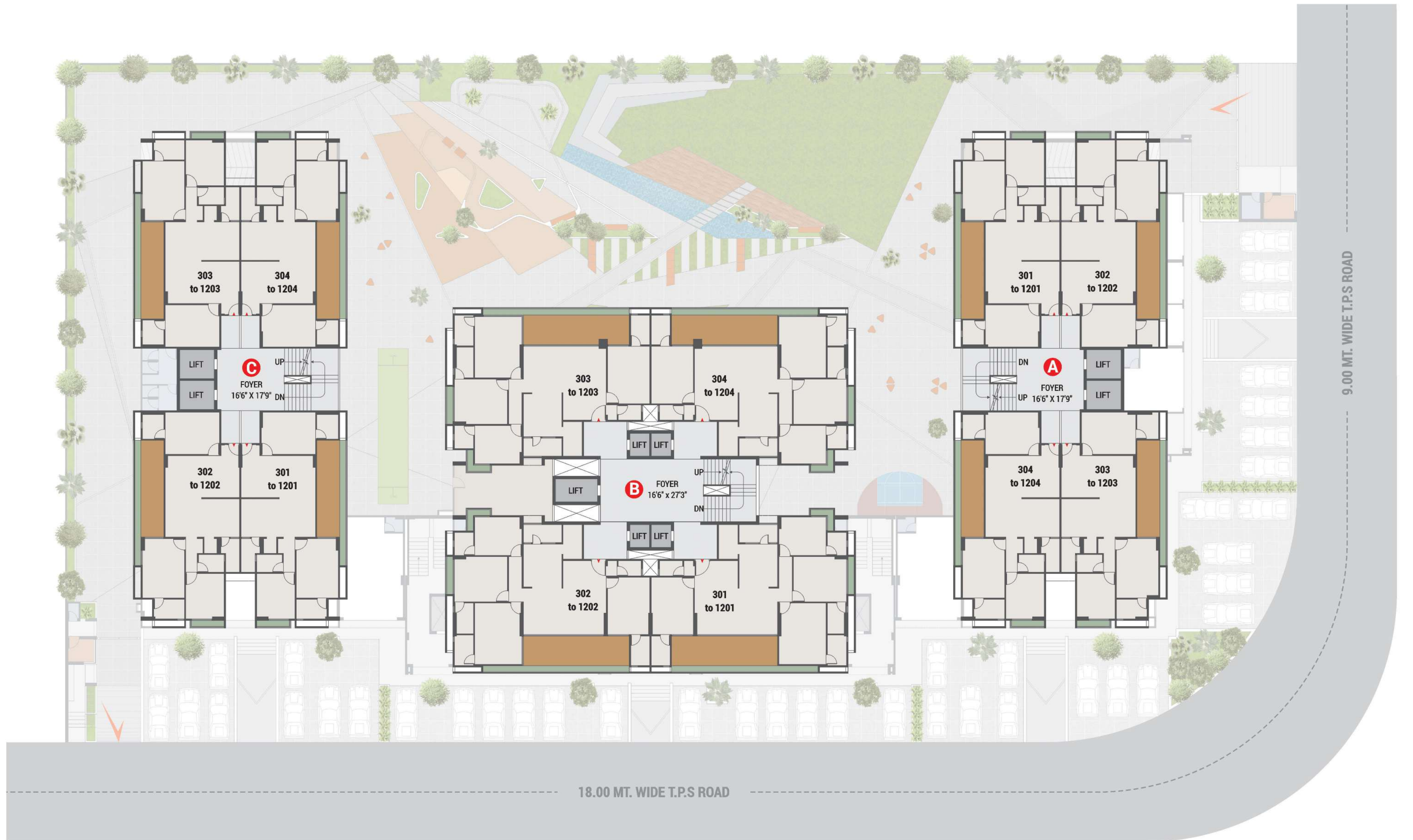
FIRST FLOOR



SECOND FLOOR

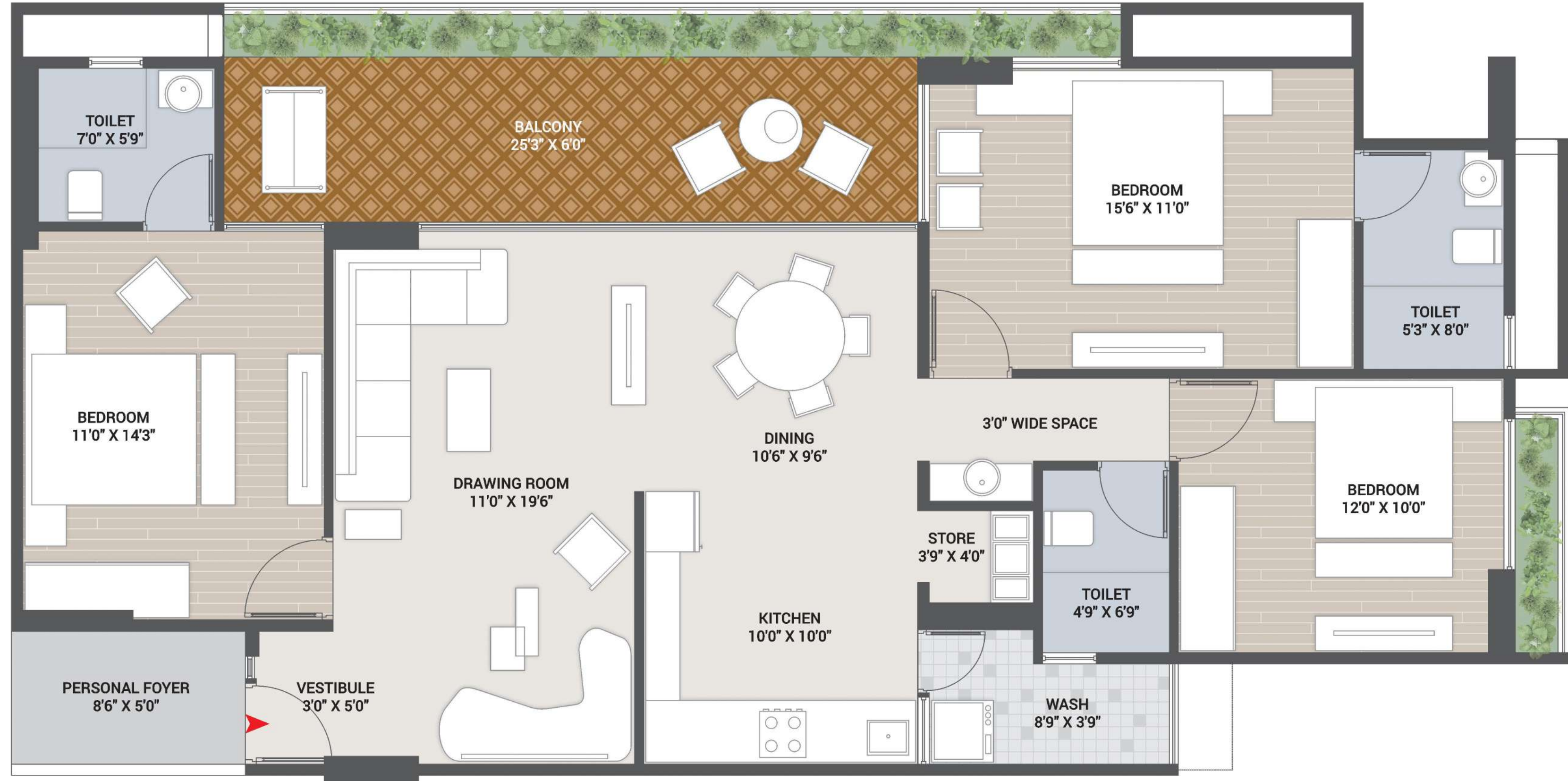


TYPICAL FLOOR (3rd Floor to 12th Floor)



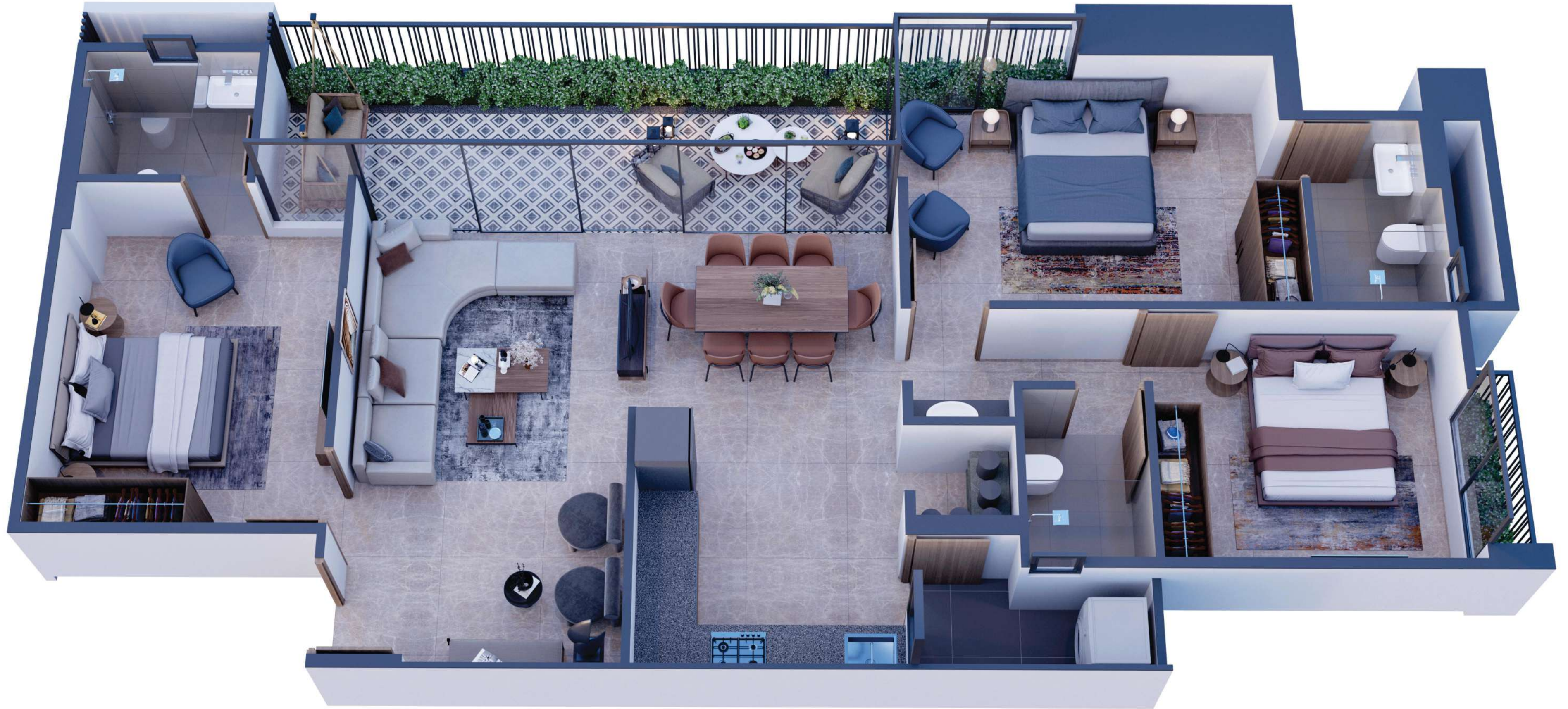
UNIT - 1 (3 BHK - 265 SQ.YD.)

BLOCK - A & C



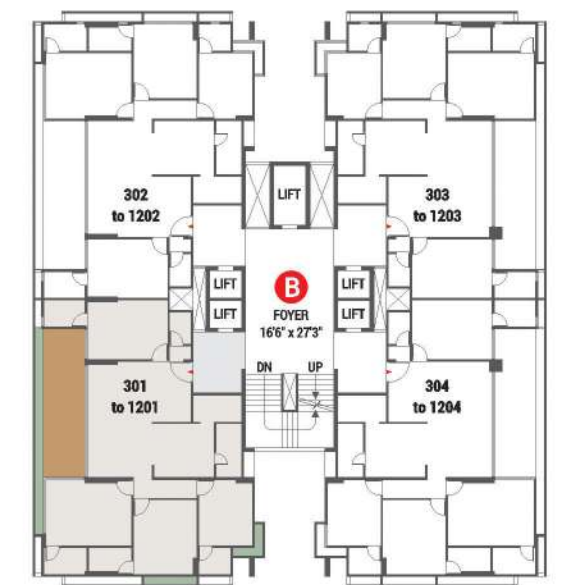
UNIT - 1 (3 BHK - 265 SQ.YD.)

BLOCK - A & C



UNIT - 2 (4 BHK - 358 SQ.YD.)

BLOCK - B



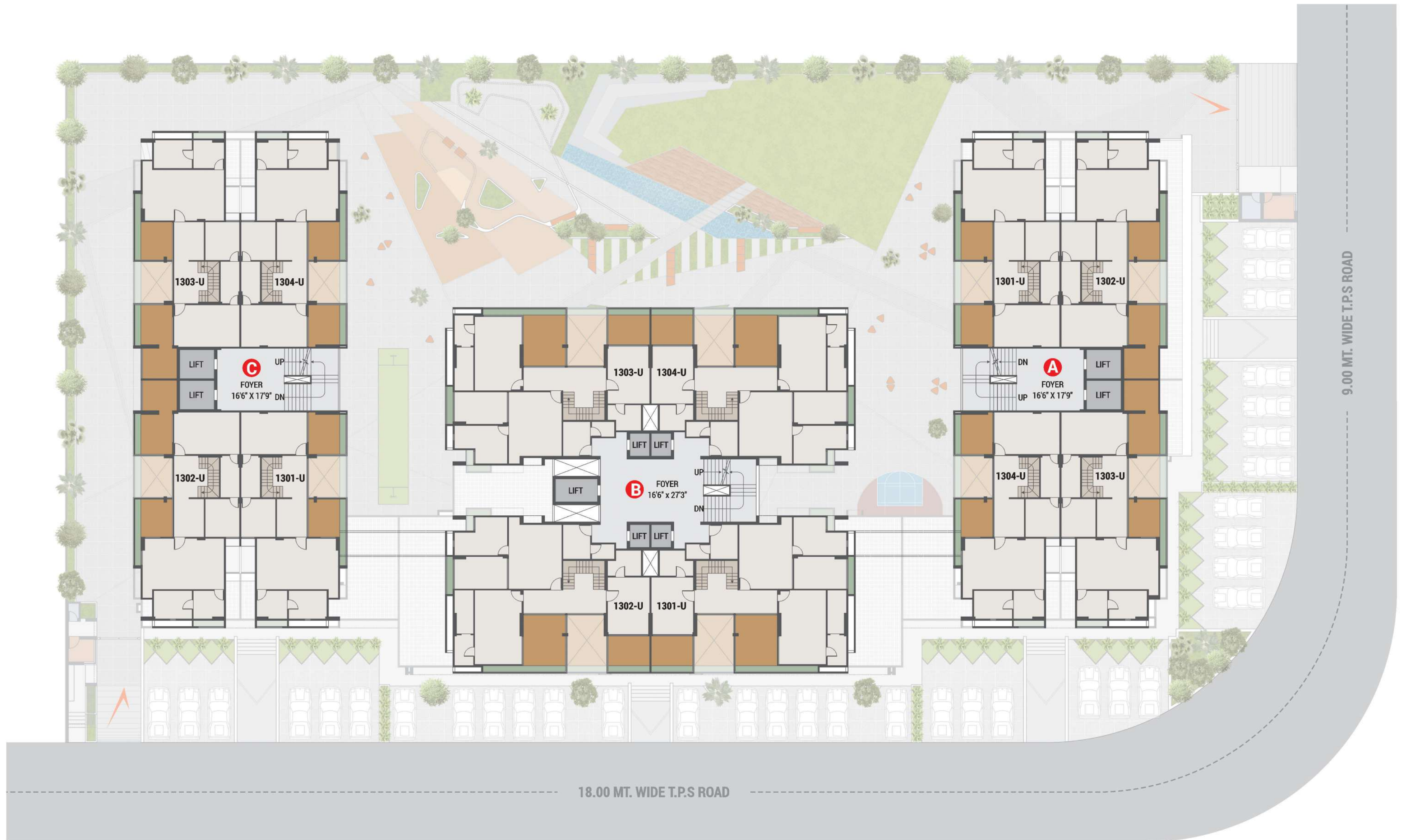
UNIT - 2 (4 BHK - 358 SQ.YD.)
BLOCK - B



13th Floor Regal Duplexes | Lower Level

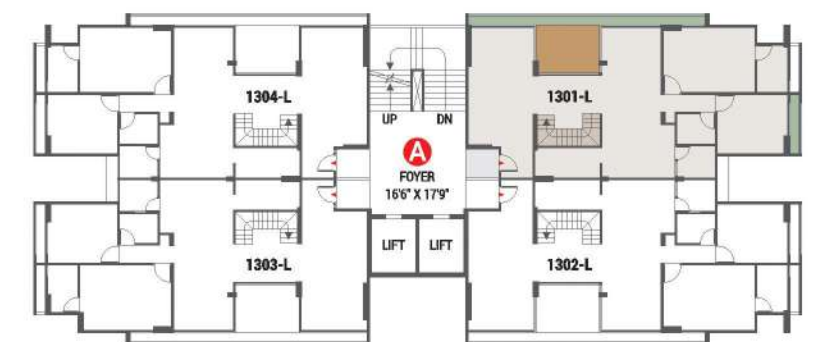
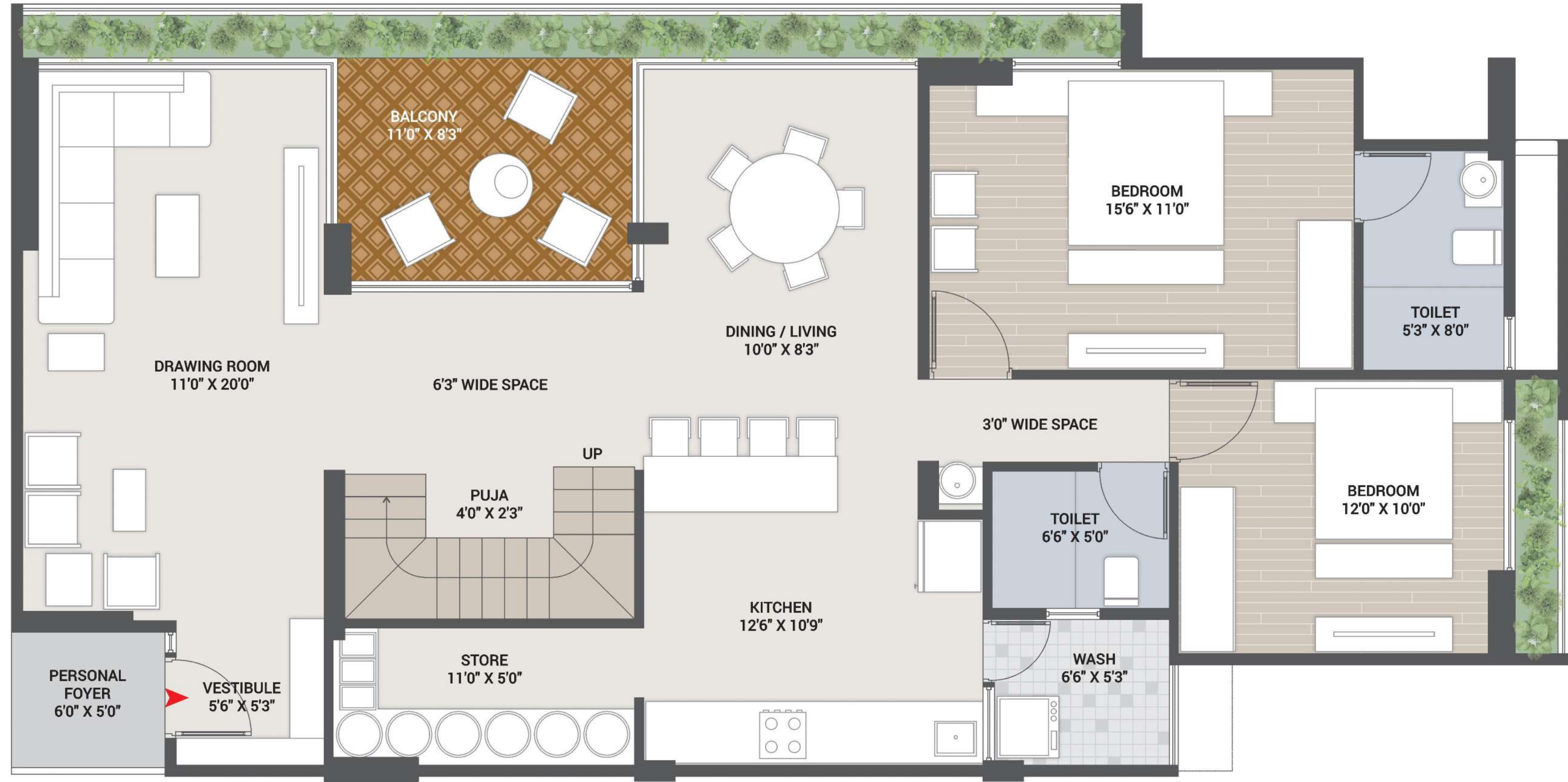


14th Floor Regal Duplex | Upper Level



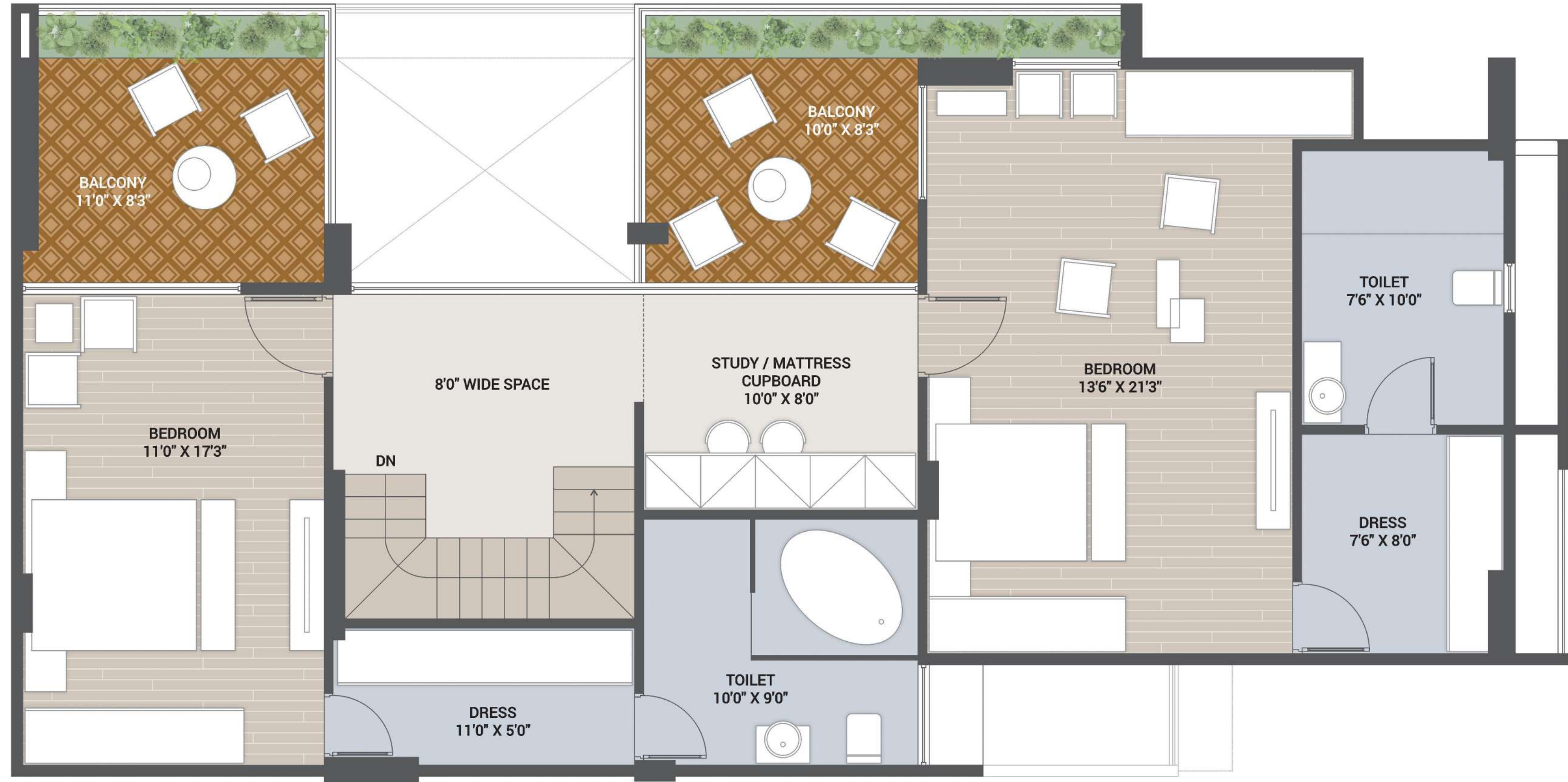
UNIT - 3 REGAL DUPLEX LOWER (4 BHK- 517/533 SQ.YD.)

BLOCK - A & C



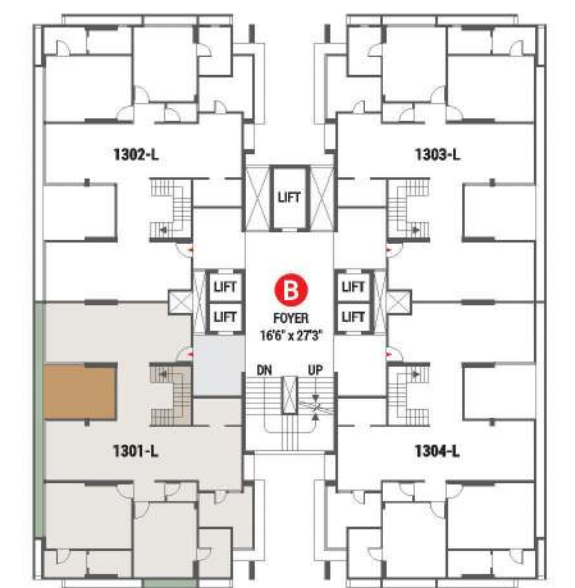
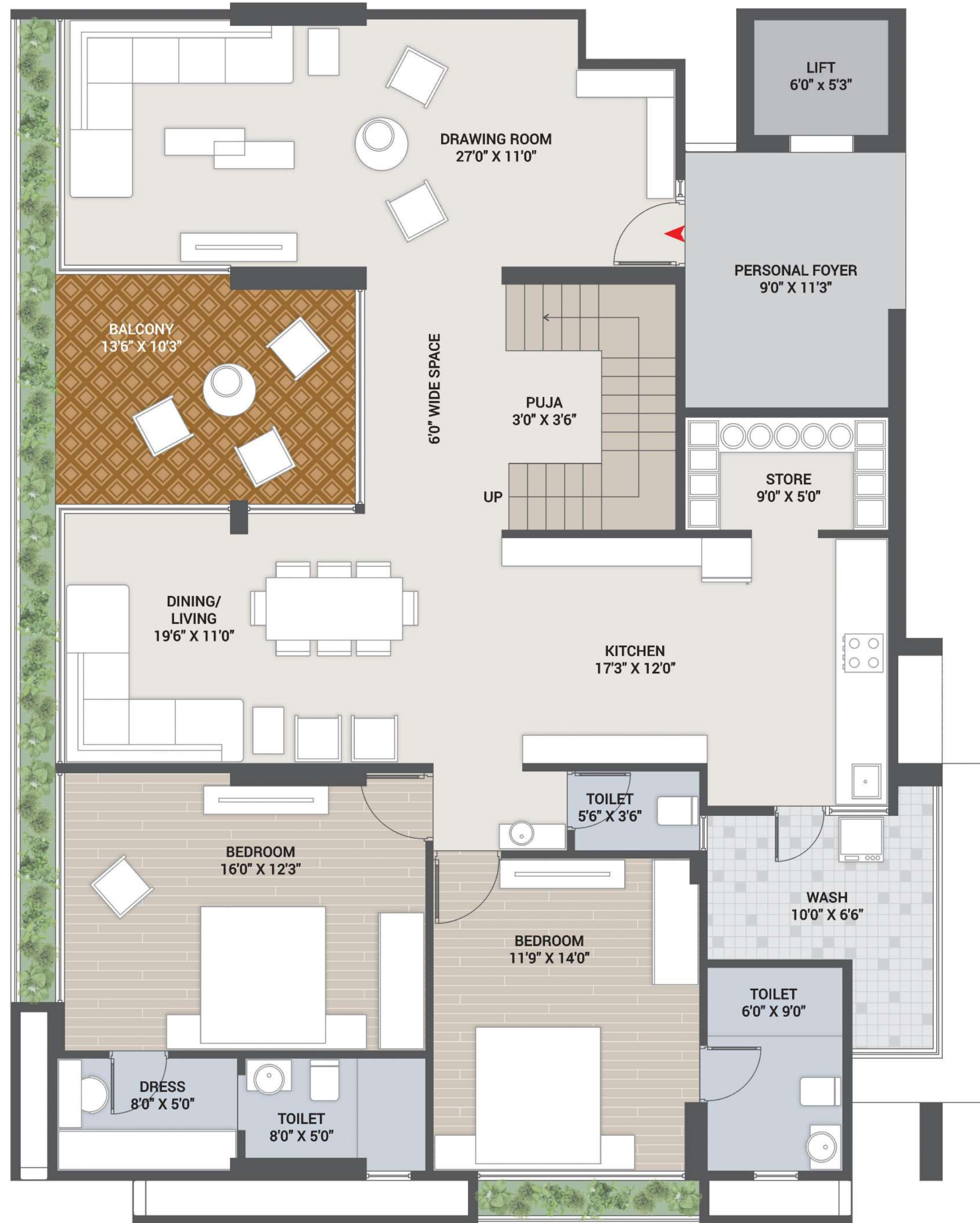
UNIT - 3 REGAL DUPLEX UPPER
(4 BHK - 517/533 SQ.YD.)

BLOCK - A & C



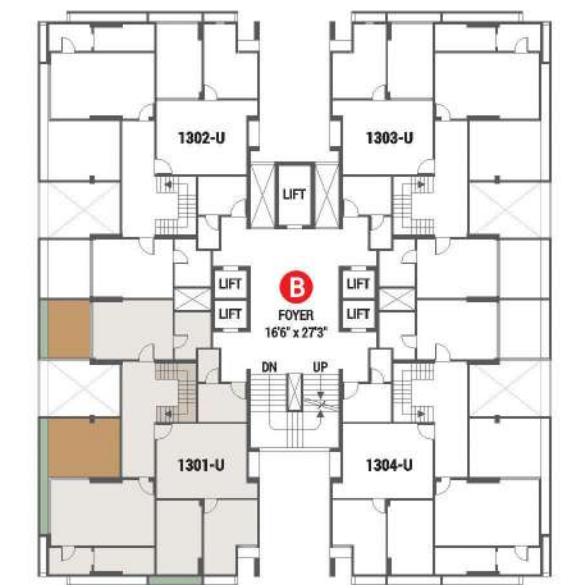
UNIT - 4 DUPLEX LOWER
(5 BHK- 684 SQ.YD.)

BLOCK - B



UNIT - 4 DUPLEX UPPER
(5 BHK - 684 SQ.YD.)

BLOCK - B



Ground Floor Amenities

01

FITNESS
STUDIO

04

BANQUET HALL WITH
EVENT LAWN

07

MULTIPURPOSE
COURT

10

DESIGNER
SITTING

02

LANDSCAPE
GARDEN

05

MODERN
LIBRARY

08

SPLASH
POOL

11

WHEELCHAIR
FRIENDLY ZONE

03

INDOOR
GAMES

06

BOX
CRICKET

09

CHILDREN
PLAY AREA

12

MOVIE
THEATER

Terrace Amenities

01

OPEN TERRACE
THEATER

04

HAPPENING
CAFÉ

07

YOGA
DECK

02

SKY
BRIDGE

05

OBSERVATORY
DECK

08

OXYGEN
PARK

03

GEATHERING
SPACE

06

DESIGNED SITTINGS
WITH SWINGS

Specifications

- RCC**
- EARTHQUACK RESISTANCE FRAME STRUCTURE
- DOOR & LOCKS**
- FULL HEIGHT FLUSH DOORS
 - MAIN DOOR : VEENER FINISHED WITH FRAME PANNELING
 - EUROPA / GODREJ
- BATHROOM & PLUMBING**
- CP FITTING : JAQUAR OR EQUIVELENT
 - SANITARYWARE : KOHLER OR EQUIVELENT
 - CPVC PIPING
- FLOORING**
- DOUBLE CHARGED VETRIFIED TILES
- WINDOW**
- DOMAL SERIES (AL. SECTION)
- ELECTRICAL**
- CABLE: R.R. / POLYCABE OR EQUIVELENT
 - SWITCH GEAR : LEGRAND OR EQUIVENT
 - CONSEALED AC PIPING
- KITCHEN**
- PREMIUM QUALITY GRANITE PLATFORM WITH HIGH GRADE SS SINK
 - GLAZED TILES ABOVE PLATFORM UPTO BEAMBOTOM LEVEL
- WALL FINISH & COLOUR**
- INTERNAL WALL : SINGLE COAT MALA FINISH WHITE CEMENT BASE PUTTY
 - EXTERIOR WALL : DOUBLE COAT MALA WITH TEXTURE
- ELEVATORS**
- FULLY AUTOMATED ELEVATORS



PANACHE

Besides Tragad Underpass, Nr. Vashnodevi Circle, Ahmedabad.

Follow Us



<p>DEVELOPER</p>  <p>AVIBHANAM® GROUP</p>	<p>ARCHITECT</p>  <p>ROYAL GROUP</p>	<p>ARCHITECT</p>  <p>ninth street architects SOURABH VERMA</p>	<p>STRUCTURE ENG.</p> <p>AMEE ASSOCIATES</p>	<p>MEP CONSULTANT</p> <p>ARTECH ENGINEERING SOLUTIONS</p>	 <p>SCAN FOR LOCATION</p>
			<p>LANDSCAPE ARCHITECT</p> <p>STUDIO 2+2</p>	<p>PARKING CONSULTANT</p> <p>PARK SPACE SOLUTIONS</p>	

PR/GJ/AHMEDABAD/AHMEDABAD CITY/AUDA/00000000/000000 | www.gujrera.gujarat.gov.in

Disclaimers

Stamp duty, Registration charges, Legal documentation charges, Initial maintenance charges, Maintenance deposit, Narmada water connection, Gas connection, GMC charges, GEB electrical charges including cable & sub-station cost shall be borne by the purchaser. GST and any additional charges, taxes, cess or duties levied by the government/local authorities prior, during or after the completion of the scheme will be borne by the purchaser. Any other liabilities due to change in the by laws, Stamp duty, Govt. Laws shall be borne by purchaser. In the interest of the continual developments in design and quality of construction, the developer reserves all rights to make suitable changes in the scheme and all the purchasers shall abide by such changes. Changes / alteration of any nature including the elevations, exterior colour scheme of the unit or any other change affecting the overall design concept & outlook of the scheme are strictly NOT PERMITTED during or after the completion of the scheme. All rights reserved with the organizers to make any changes in the scheme & specification and the members shall abide by such changes. Internal changes shall be done only with prior permission & shall be charged extra in advance. Irregular payment shall cause cancellation of booking. This brochure is intended only to convey the essential design and technical features of the scheme and shall not be construed to form part of the legal document. Agreement for sale shall be final and binding to the purchaser. All elements, objects, treatments, material, equipment and colour scheme shown are artist's impression. Actual may be different as per architect's design. All dimension shown here are unfinished to unfinished wall and of the longest measure of the area. Subject to Gandhinagar Jurisdiction.